

# Ohio Lake Erie Dredged Material Program – 2019 Update



Great Lakes Dredging Team Meeting  
June 10, 2019

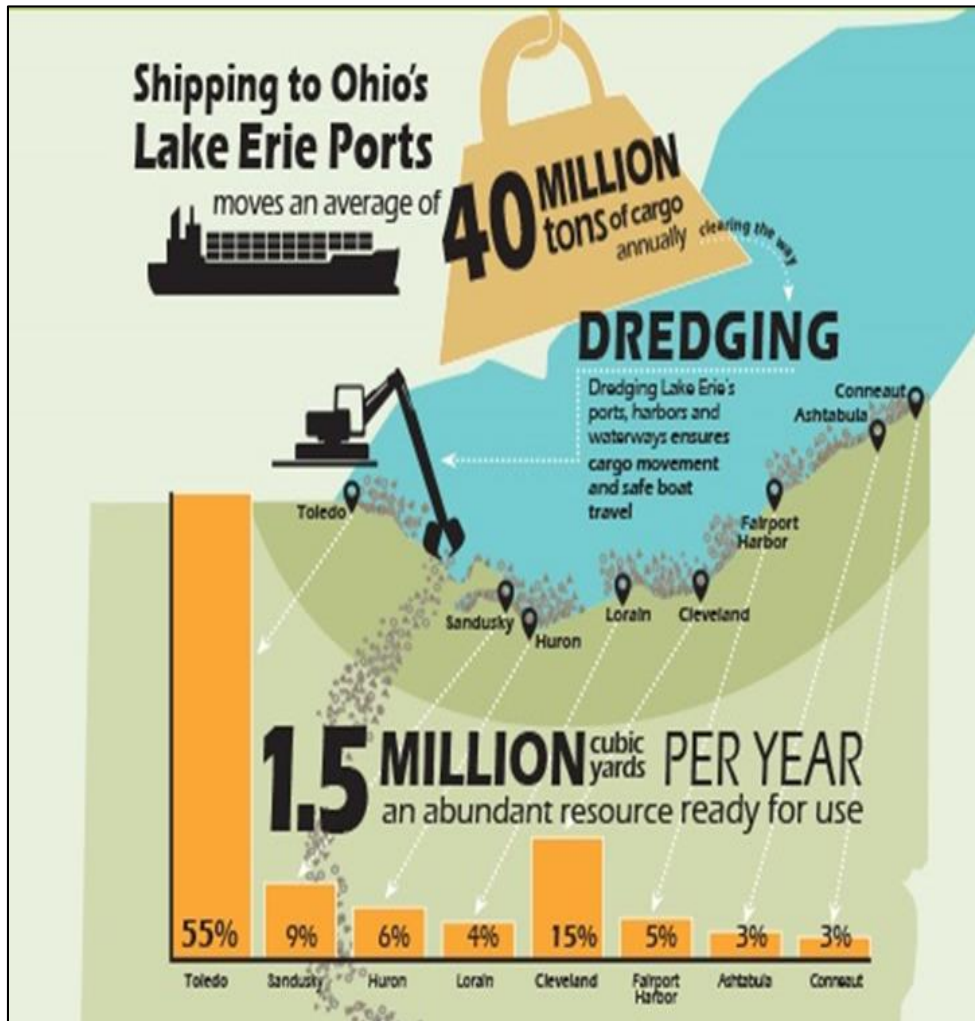


Ohio Department of  
**NATURAL  
RESOURCES**  
OFFICE OF COASTAL MANAGEMENT



**Ohio** | Lake Erie  
Commission

# State of Ohio Beneficial Use Challenges

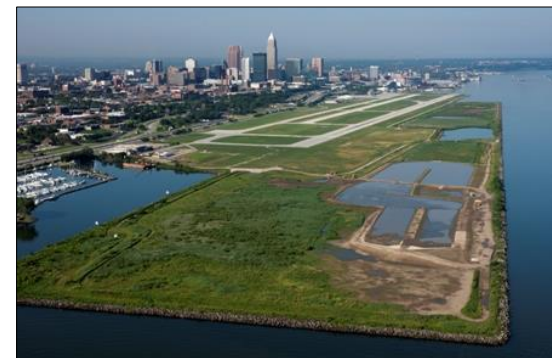


- Eight federal navigation channels
- Seven use open-lake disposal
- 1.5 M cubic yards per year
- **SB 1 July 2020 no open-lake disposal deadline**
- 20% Reduction in sediment load by 2025

# Potential Solutions

## Dredged Material is a Resource, Not a Waste

- Soil Processing Facilities
  - Fill and cap material
  - Soil blending
- Manufactured Products
  - Component of another product (cement)
  - Ohio Materials Marketplace
- Agricultural
  - Agricultural (farm field) applications
- Environmental Enhancement
  - In-water wetland habitat restoration
  - Nature-based shorelines



# Implementation Strategies

- OEPA, ODNR are changing Beneficial Use rules
- General permits
  - Soil background studies, sediment profiles
  - Establishing BMPs that work for industry
  - Addressing public perception
- Dredging Center for Innovation
  - Engaging farmers
  - Dewatering, yield, contaminant uptake
  - Implement larger-scale project
- Funding Capital Improvements
  - Port of Toledo
  - Port of Cleveland
  - City of Sandusky



# Ohio Healthy Lake Erie Fund

\$10,000,000 **Closed Out 2018**

- Port of Toledo - \$ 5,350,000 (**Spent**)
  - Agricultural Field Improvement (\$ 2.5 M)
  - Blended Soil Production
  - Infrastructure (Long-Term Pump Out and Sediment Storage/ Processing Facilities at Facility 3)
  - Beneficial Use Habitat Restoration Project(s) City of Toledo, Oregon
  - Streamside Feasibility/Pilot Project (City of Findlay)
- Port of Cleveland - \$ 3,650,000 (**Spent**)
  - Sediment Management Demonstration Project (Bedload Sediment Interception) (\$1.2 M)
  - CDF 12 “Plan B” Sediment Processing Facility (\$ 1.45 M)
  - CDF 12 Expansion (\$ 1.0 M)
- City of Sandusky - \$ 1,000,000 (**Spent**)
  - Sandusky Bay Initiative (\$1.0 M)

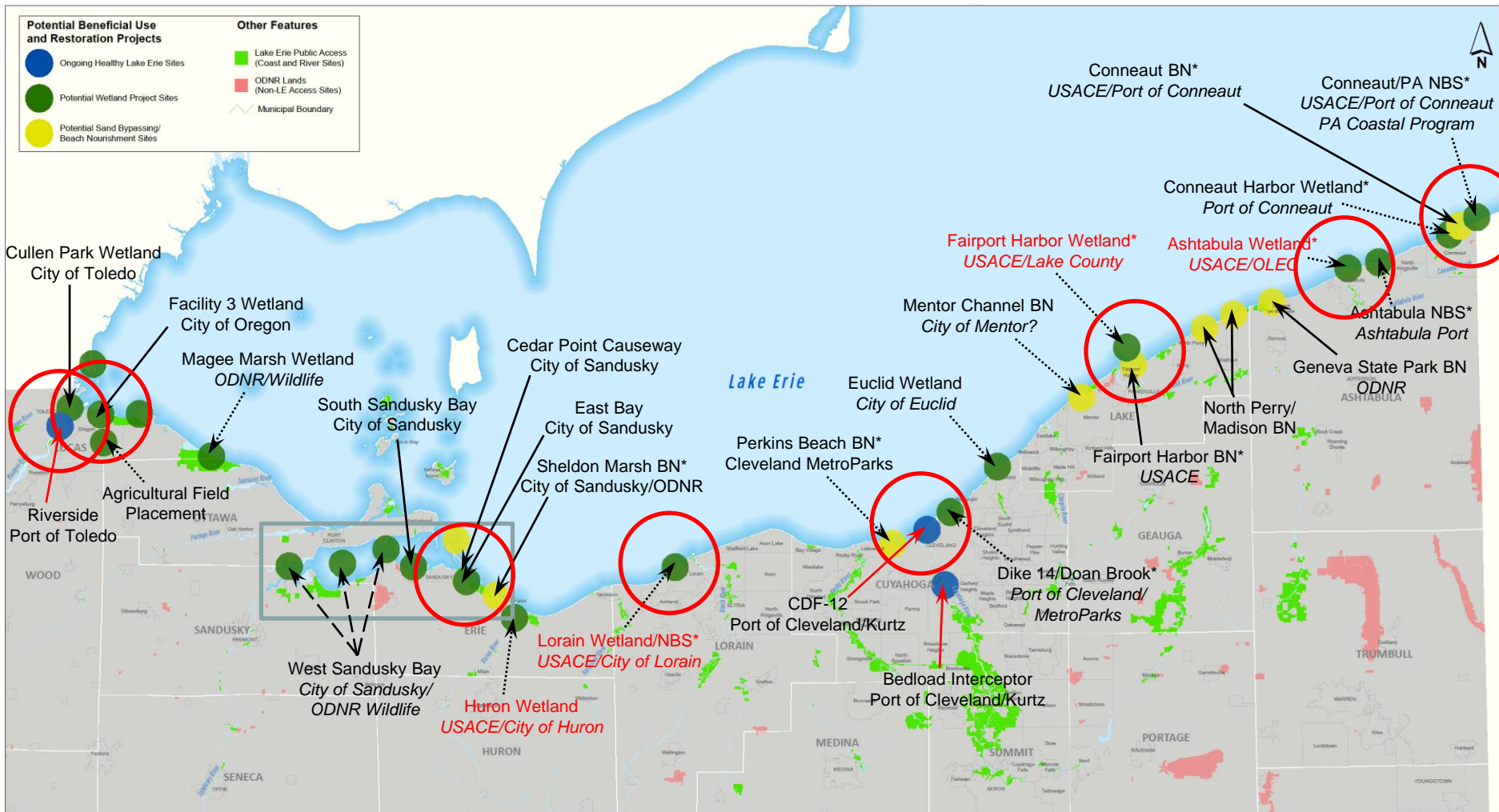
# Ohio Healthy Lake Erie Fund (2019-2020)

- HB 529 \$10M Capital Appropriation
  - March 30, 2018 (effective date July 1, 2018)
  - General capital fund request, includes beneficial use projects
- SB 299 \$10M Capital Appropriation
  - July 11, 2018 (effective date October 10, 2018)
  - Specifically for beneficial use of dredge material projects

-----
- January 2019 requested CB approval for \$9.1M for three beneficial use projects – *Conneaut, Lorain, Toledo*
- \$3.5M allocated for Ashtabula CAP 204 wetland project
- \$3.0M allocated for Cedar Point Causeway wetland
- Exploring sediment processing facility at Fairport Harbor
- Mentor Marsh Restoration (salt tailings litigation)
- Port of Cleveland reconfigures CDF 12 (not HLEF)

# Potential Beneficial Use and Restoration Projects

## Ohio Lake Erie Coastal Area



# City of Conneaut



		DATE	
		NO	REVISION
SCALE: 1" = 250'	DATE: 9/7/18	NO	REVISION
DRAWN BY: CTC	DATE: 9/7/18	NO	REVISION
CHECKED BY: CTC	DATE: 9/7/18	NO	REVISION
PROJECT NO: 180703	DATE: 9/7/18	NO	REVISION
DRAWING NAME: DD.1	DATE: 9/7/18	NO	REVISION
<b>CONFINED DISPOSAL FACILITY</b>		<b>CITY OF CONNEAUT</b>	
<b>1</b>	<b>1</b>	PROJECT NO: 180703 DRAWING NAME: DD.1	



# City of Lorain



# Port of Toledo



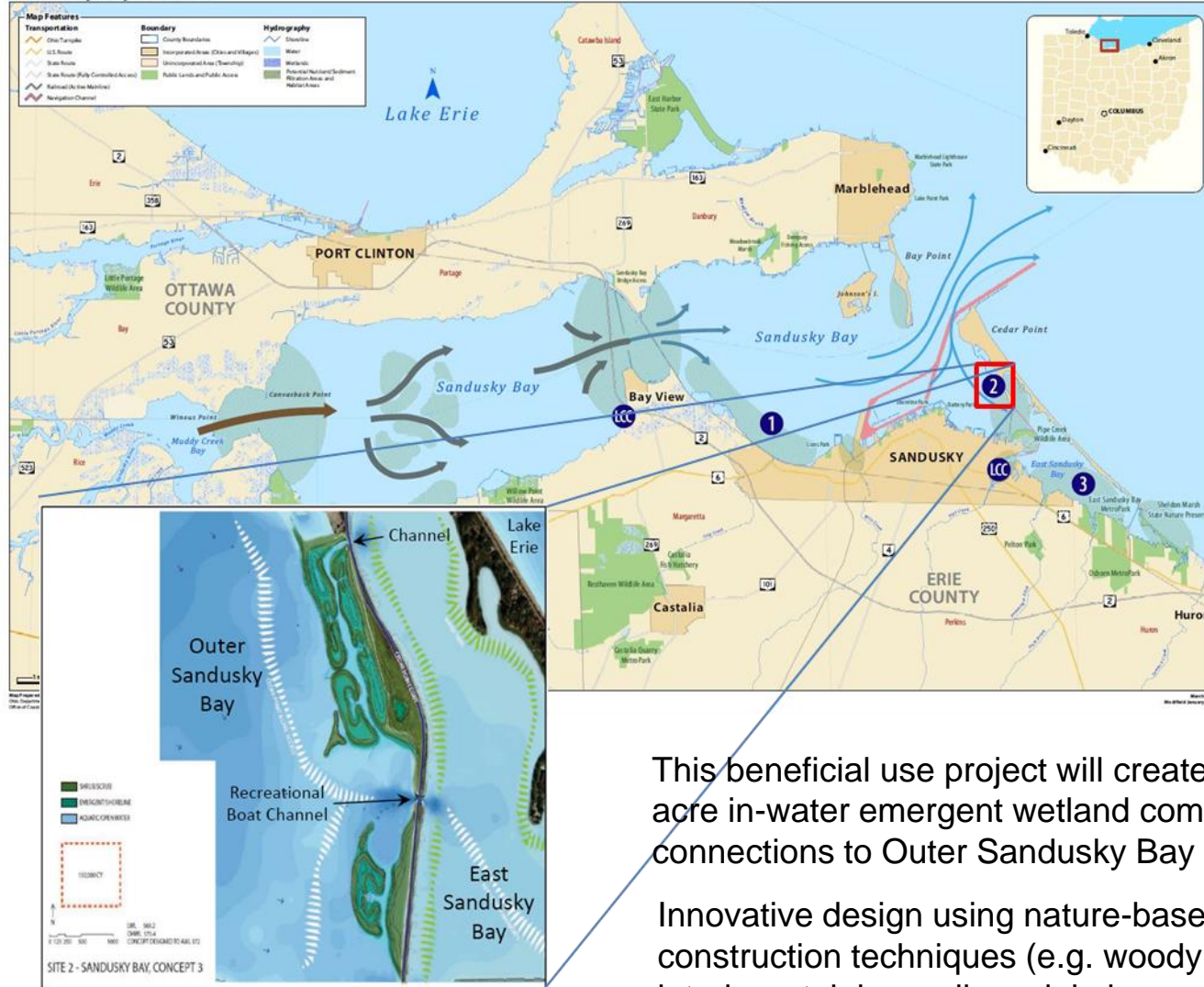
NO.	DESCRIPTION	DATE
1	ISSUED FOR PERMIT	02/22/2018
2	REVISED	03/01/2018
3	REVISED	03/01/2018
4	REVISED	03/01/2018
5	REVISED	03/01/2018
6	REVISED	03/01/2018
7	REVISED	03/01/2018
8	REVISED	03/01/2018
9	REVISED	03/01/2018
10	REVISED	03/01/2018

PORT AUTHORITY FACILITY 3

2019 DREDGED MATERIAL MANAGEMENT PROJECTS

# Cedar Point Causeway Project

## Sandusky Bay Initiative

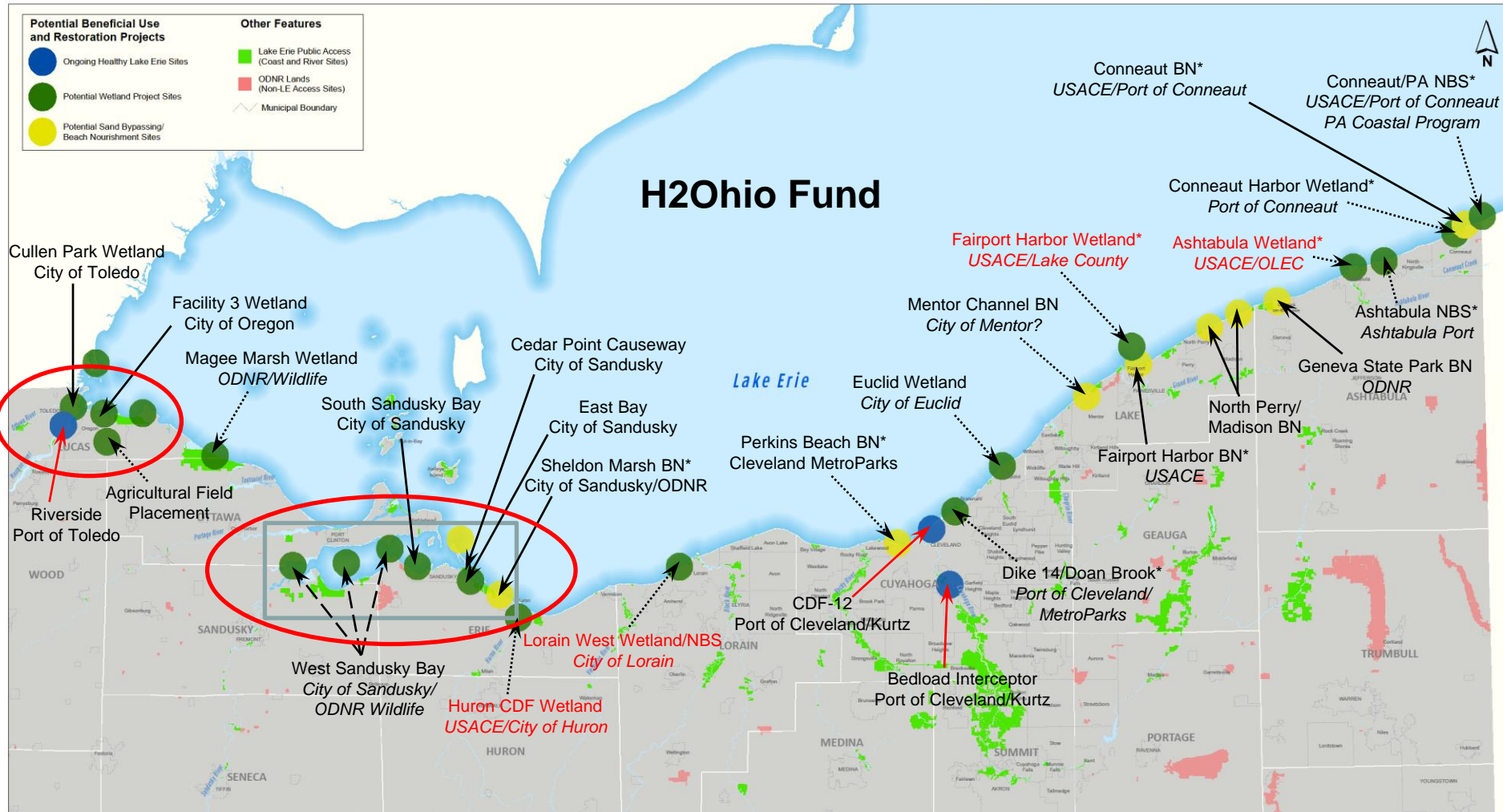


This beneficial use project will create a diverse 100 to 120 acre in-water emergent wetland complex with natural connections to Outer Sandusky Bay and East Sandusky Bay.

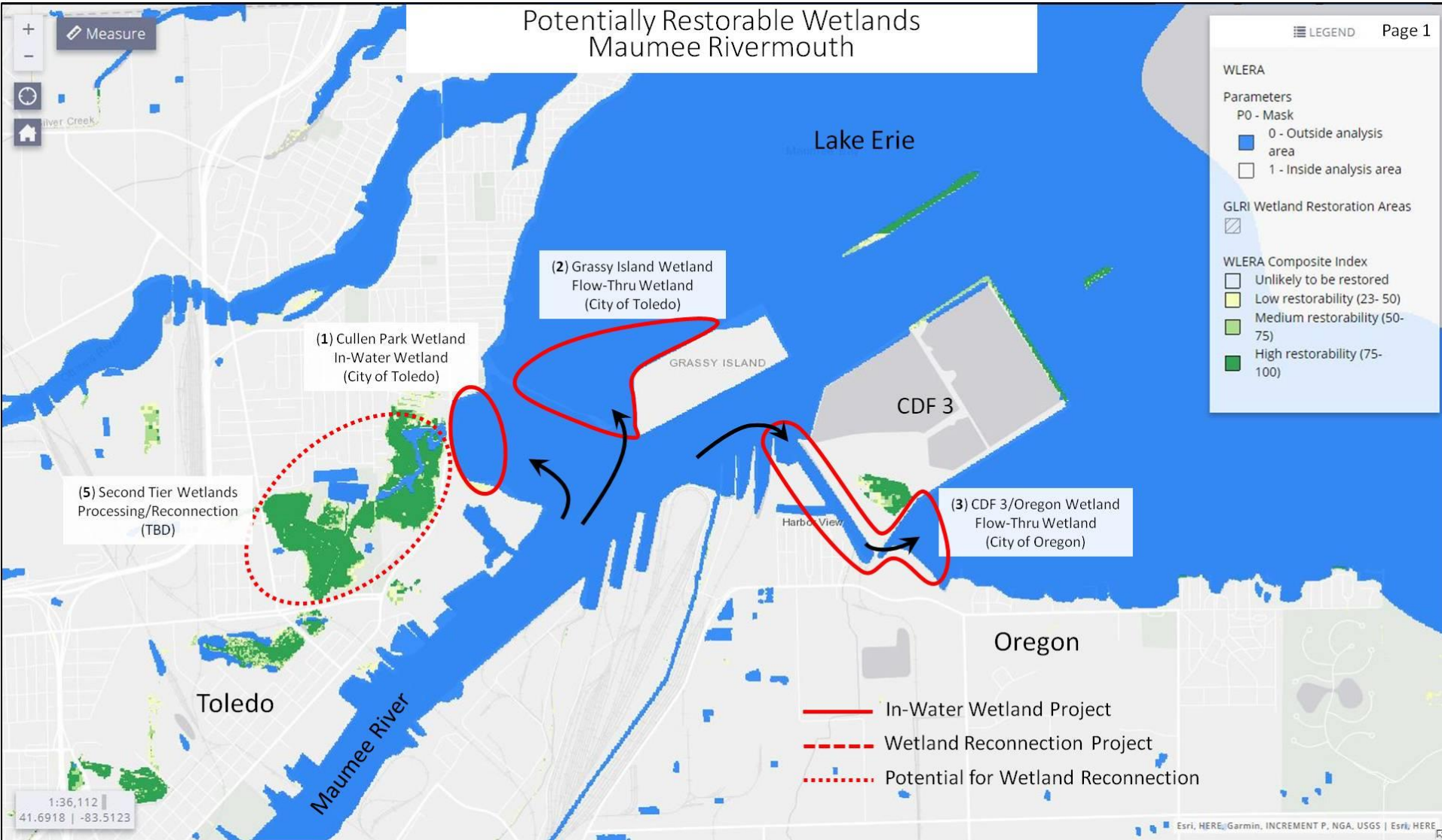
Innovative design using nature-based shoreline design and construction techniques (e.g. woody debris, biodegradable interior retaining walls, minimize use of stone).

# Potential Beneficial Use and Restoration Projects

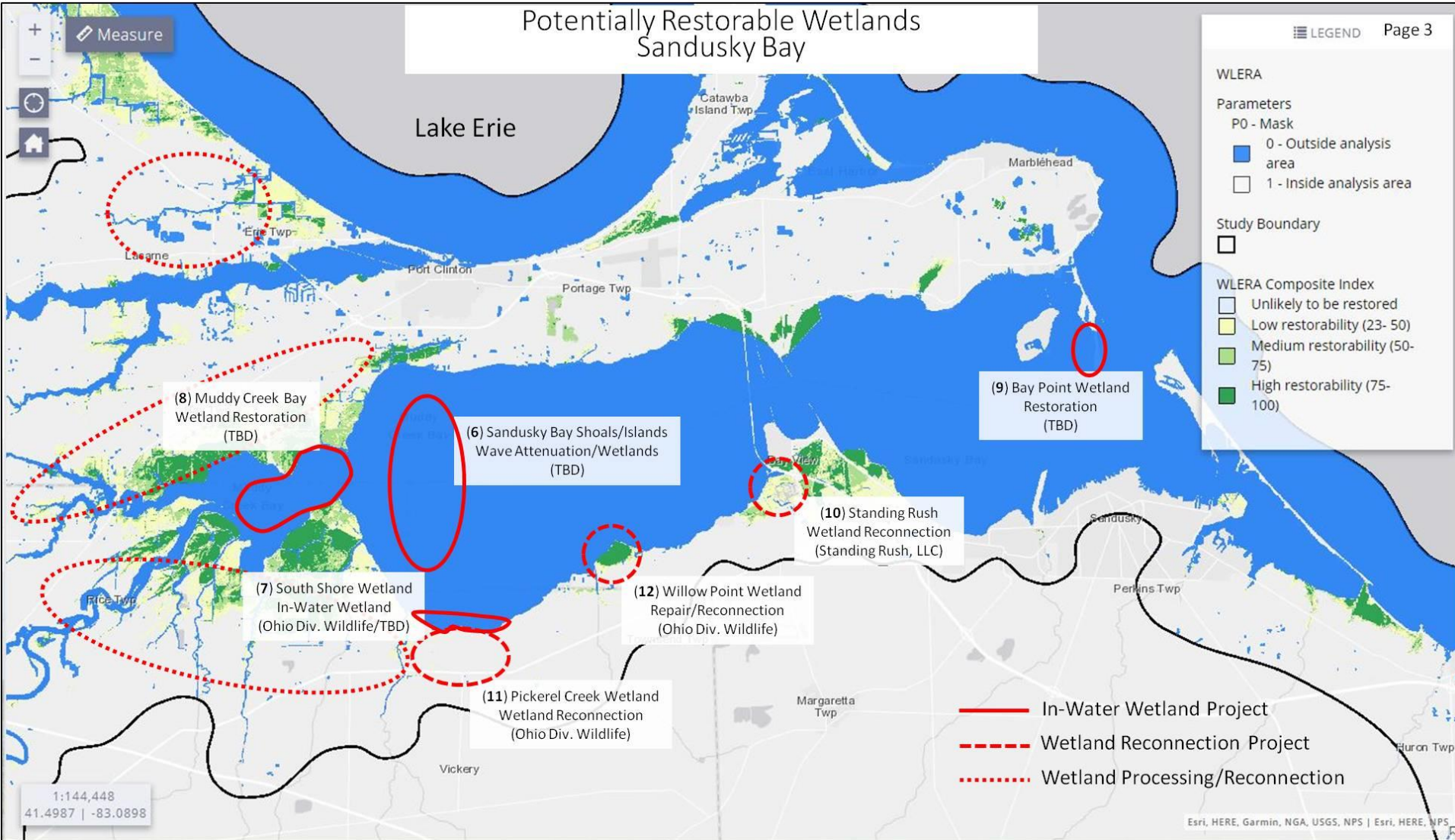
## Ohio Lake Erie Coastal Area – H2Ohio Fund



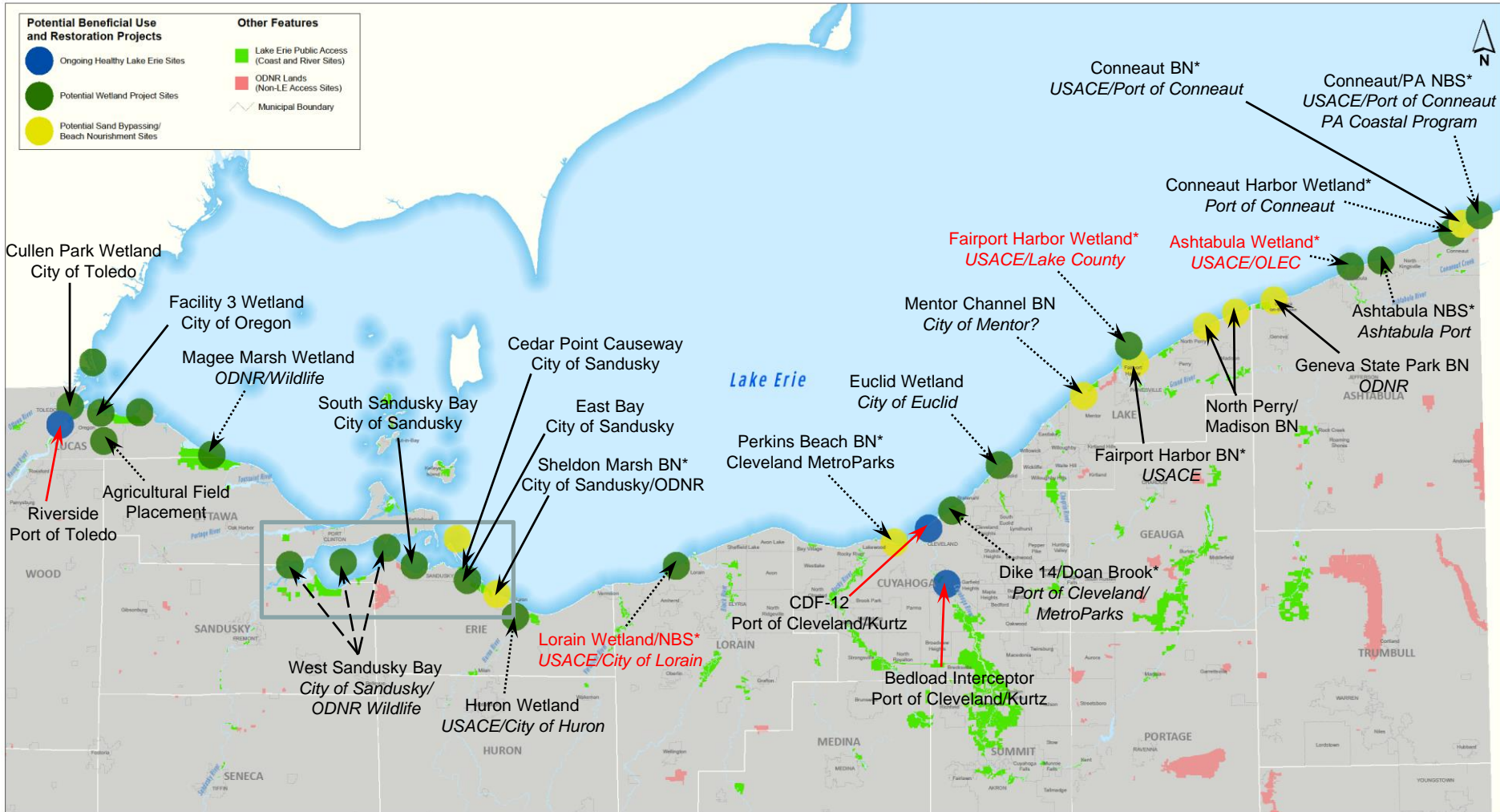
# H2Ohio Fund



# H2Ohio Fund



# Strategic Implementation of Potential Beneficial Use Restoration Projects - Ohio



# Beneficial Use and In-Water Habitat Restoration

- Perform systematic analysis of Beneficial Use opportunities along entire 312 mile Ohio Lake Erie coastline.
- Similar to financial investments, develop a “portfolio of projects” that achieve desired goals and objectives.
  - Design for project linkages that yield cumulative benefits that achieve desired goals and benefits.
  - Avoid “Random Acts of Restoration”
  - Use technical expertise and guidance to identify and create new restoration (i.e. investment) opportunities.
  - Structure project investments based on short-, intermediate-, and long-term timeframes.
  - Will allow us to coordinate federal and non-federal match, dredging activity



# Beneficial Use Project GIS Development

Name	Id	Acres	Perimeter	County	Latitude	Longitude	Proj_Type	Near_Port	Mat_T	Place_Freq	Use_Sui	Poten_Part	Imple_Cap	Proj_Obs	Permit_	Fund_	Status_	Timing	Proj_Just	Dollar_Am	Port_Dist	Avg_Bathy	Mat_Vol
Riverside	1	35.959926	1921.925061	Lucas	41.670215	-83.502667	Infrastructure/OHLE	Toledo				Port of Toledo			HLEF	Ongoing	Complete				2	0	0
Cullen Park Wetland	2	27.799181	2273.558956	Lucas	41.699632	-83.475234	Potential Wetland/NBS	Toledo				City of Toledo			HLEF	E&D	Active				0.7	2	807287
Proposed Agricultural Use Staging Impoundment Dike	1	36.880161	1869.817482	Lucas	41.697867	-83.437842	Infrastructure/OHLE	Toledo													1.8	0	0
CDF 3	1	154.21546	4112.294207	Lucas	41.702974	-83.427473	Infrastructure/OHLE	Toledo				Port of Toledo			HLEF	Ongoing	Active				2.6	0	0
CDF 3	1	159.615341	3559.466645	Lucas	41.706618	-83.428239	Infrastructure/OHLE	Toledo				Port of Toledo			HLEF	Ongoing	Active				2.6	0	0
CDF 3 Wetland	2	130.886182	4758.931101	Lucas	41.696568	-83.429322	Potential Wetland/NBS	Toledo				City of Oregon			HLEF	E&D	Active				2.4	3	5701370
Maumee Bay Wetland	2	12.617859	1914.477974	Lucas	41.688081	-83.385339	Potential Wetland/NBS	Toledo													4.6	2	366420
Little Cedar Point Wetland	2	53.627913	4431.394468	Lucas	41.695839	-83.343426	Potential Wetland/NBS	Toledo				Port of Toledo						Mid			6.6	2	1557350
Crane Creek Wetland	2	344.947803	7247.6524	Lucas	41.630131	-83.207031	Potential Wetland/NBS	Toledo													14.2	1.5	7512930
Magsee Marsh Wetland	2	111.625134	9324.983947	Ottawa	41.621352	-83.158329	Potential Wetland/NBS	Port Clinton				ODNR/Wildlife						Mid			13.1	2	3241580
Sandusky Bay Bay Point Wetland	2	66.432157	3187.517205	Ottawa	41.491942	-82.716172	Potential Wetland/NBS	Sandusky				City of Sandusky			HLEF/GLRI	Phase 2	Pending				2.3	5	4822970
Sandusky Bay South Shore Wetland	2	168.299421	7542.745507	Erie	41.450581	-82.769183	Potential Wetland/NBS	Sandusky				City of Sandusky			HLEF	E&D	Active				2.3	2	4887400
Cedar Point Causeway Wetland	2	19.930358	1351.560881	Erie	41.45902	-82.673832	Potential Wetland/NBS	Sandusky				City of Sandusky/Ced			HLEF/GLRI	E&D	Active				2.4	2	578777
Cedar Point Causeway Wetland	2	56.187898	2727.443995	Erie	41.465821	-82.675843	Potential Wetland/NBS	Sandusky				City of Sandusky/Ced			HLEF/GLRI	E&D	Active				2.4	2	1631690
Huron River Wetland	2	21.206683	1399.968058	Erie	41.399324	-82.551673	Potential Wetland/NBS	Huron													0.3	0	0
Lorain West Wetland/NBS (CAP 204) 12000	2	91.310326	8353.458137	Lorain	41.431531	-82.2741	Potential Wetland/NBS	Lorain				City of Lorain			USACE/HL		Active				5.5	2	2651640
Lorain West Wetland/NBS (CAP 204) 6700	2	21.28751	4408.36554	Lorain	41.443156	-82.236112	Potential Wetland/NBS	Lorain				City of Lorain			USACE/HL		Active				3.8	2	618187
Black River Harbor Wetlands	2	8.534354	1211.346736	Lorain	41.466139	-82.191964	Potential Wetland/NBS	Lorain													0.9	0	0
Black River Harbor Wetlands	2	3.995733	704.602857	Lorain	41.475392	-82.180704	Potential Wetland/NBS	Lorain													0.2	0	0
Black River Harbor Wetlands	2	16.676663	1411.238231	Lorain	41.474349	-82.17043	Potential Wetland/NBS	Lorain													0.3	0	0
Black River Dredge Reuse Facility	1	43.481563	4215.26015	Lorain	41.453268	-82.141848	Infrastructure/OHLE	Lorain				City of Lorain			HLEF		Active				2.3	0	0
Perkins Beach Nourishment	3	5.47807	954.780008	Cuyahoga	41.48934	-81.753415	Beach Nourishment	Cleveland				Cleveland MetroParks						Long			3.1	0	0
CDF 12	1	81.104989	3220.573466	Cuyahoga	41.52774	-81.668825	Infrastructure/OHLE	Cleveland				Port of Cleveland/Kurt			HLEF	Ongoing	Complete				2	0	0
Dike 14 Wetland	2	7.346729	745.083509	Cuyahoga	41.541926	-81.634678	Potential Wetland/NBS	Cleveland				Port of Cleveland/Clev						Mid			3.9	0	0
Mentor Channel Beach Nourishment	3	4.189017	1253.262347	Lake	41.728294	-81.34925	Beach Nourishment	Fairport Harbor				City of Mentor			Mentor	Ongoing	Active				4	0	0
Fairport Harbor Wetland (USACE CAP 204)	2	50.019899	3709.556051	Lake	41.765752	-81.265597	Infrastructure/Wetland/NBS	Fairport Harbor				USACE/Lake County						Pending			1.1	0	0
Fairport Potential Sed Proc Facility	1	109.482404	2944.143631	Lake	41.762834	-81.237772	Infrastructure/OHLE	Fairport Harbor													2.2	0	0
Ashtabula Harbor Wetland (USACE CAP 204)	2	32.524994	1973.03947	Ashtabula	41.916591	-80.786228	Potential Wetland/NBS	Ashtabula				USACE/Ashtabula Port			USACE/HL		Active				0.9	0	0
Conneaut CDF	1	6.147504	722.411655	Ashtabula	41.96338	-80.543903	Infrastructure/OHLE	Conneaut				City of Conneaut			HLEF		Active				0.5	0	0



Snapping

Identify from:

- Beneficial\_Use\_Projects
  - CDF 3
  - CDF 3

Location: 1,715,158.050 743,311.694 Feet

Field	Value
Name	CDF 3
Id	1
Acres	154.21546
Perimeter	4112.294207
County	Lucas
Latitude	41.702974
Longitude	-83.427473
Proj_Type	Infrastructure/OHLE
Near_Port	Toledo
Mat_Type	
Place_Freq	
Use_Suit	
Poten_Part	Port of Toledo
Imple_Cap	
Proj_Obst	
Permit_	
Fund_	HLEF
Status_	Ongoing
Timing	Active
Proj_Just	
Dollar_Amo	

Identified 2 features

# Questions?

